

Operator's Manual - English

COMPRESSION SPRAYER JACTO HH-5

Code: 1231961



Assembled by INTERMAN Corporation Ltd.
under license of Máquinas Agrícolas Jacto S.A.
Rojana Industrial Park (Rayong)
3/3, Moo 2, Bankhai-Banbueng Rd.T.
Nongbua.
A.Bankhai Rayong 21120 - Thailand
E-mail: info@jacto.com

Customer assistance: JACTO INC.
19217 SW 119 th Ave.
Tualatin, Oregon 97062
Tel: (503) 885-8723
Fax: (800) 511-3671
Toll free: (800) 522-8610
E-mail: info@jacto.com
Home page: www.jacto.com

SAVE THESE INSTRUCTIONS: This manual contains important safety instructions for the proper use and maintenance of this product.

1. Introduction

This manual contains information for the proper assembly, operation and care of your sprayer. Carefully read and follow the instructions contained in this manual before using your sprayer.

This equipment was designed for spraying plants protection products approved by regulatory authorities to be used in compression sprayer.

2. Specifications

Model	Jacto HH-5
Net weight	3.5 lbs. (1.6 Kg)
Gross weight	14.6 lbs. (6.6 Kg)
Spray lance length	13.8 in. (350 mm)
Hose length	65 in (1650 mm)
Chemical tank	
Capacity	1.32 gal. (5 liters)
Material	Polyethylene
Pump	
Type	Piston
Maximum pressure	35 PSI (2.4 Bar)
Nozzle installed	Blue adjustable cone
Material	Polyethylene

3. Preparing the Product For Use

3.1. Unpacking

Remove from the sprayer carton the following parts:

Hose

Trigger valve

Handle

Lance

Shoulder strap

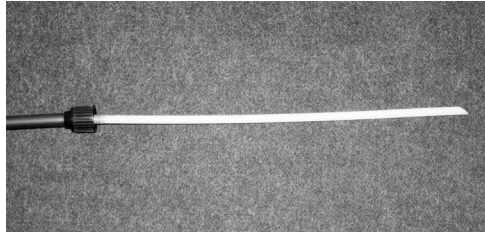
Tank

Manual



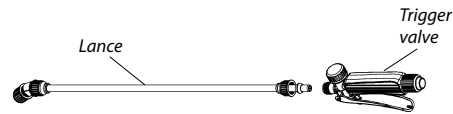
3.2. Attaching the hose to the tank

- Insert into the tank the part showed below and secure it with the screw cap.



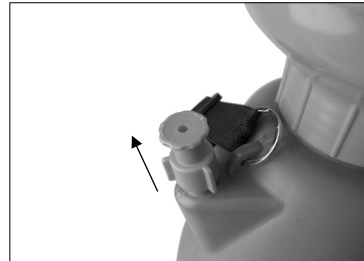
3.3. Attaching the lance to the trigger valve

- Insert the lance into the trigger valve and secure it with the screw cap.



3.4. Filling the tank and preparing to spray

- Put the sprayer on a flat surface and remove all the internal tank pressure by lifting up on the pressure relief valve;



- Pull the handle down, lock it in the cylinder and turn the handle counter-clockwise to remove the cylinder;



- Fill with the plant protection product. Do not remove the cone lid for filling. It prevents against spillage of chemicals;



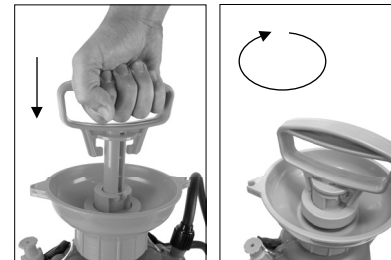
- Install the cylinder again and rotate clockwise to lock it;



- Unlock the handle and pump at least 30 times or until the pressure relief valve opens;



- Lower the handle and turn it clockwise to lock it;



- The sprayer is ready for use and can be transported verti-

cally on the shoulder by the strap;

- After spraying, remove the internal pressure by lifting up on the pressure relief valve according to the operation 1.

3.5. Spraying

The blue adjustable cone nozzle that comes along with this compression sprayer can be adjustable to apply as a spray or a jet. As shows below:



4. Storage and Maintenance

- The sprayer must not be stored with any chemical inside and / or stored with internal pressure.
- After the application, remove all internal pressure, empty the tank, clean and wash all equipment in a place where there is no risk of contamination.
- Periodically lubricate the sprayer by removing the handle from the cylinder and lubricating the piston ring as indicates in the figure below:



5. Troubleshooting

- Put about 5 liters of water in the tank.
- Pressure the sprayer by pumping it.
- Observe the sprayer to see how the problem arises.
- Refer to the table and diagram below.

DESCRIPTION	CAUSES	CORRECTIONS
Leakage through the cylinder upper part.	Worn or dried out the piston ring.	Replace or lubricate the pump.
The handle drops fast.	Cylinder valve not sealing properly due to wear or impurities.	Clean or replace the piston ring.
The handle rises quickly when released.	Chamber valve not sealing properly due to wear or impurities.	Clean or replace the valve piston ring.

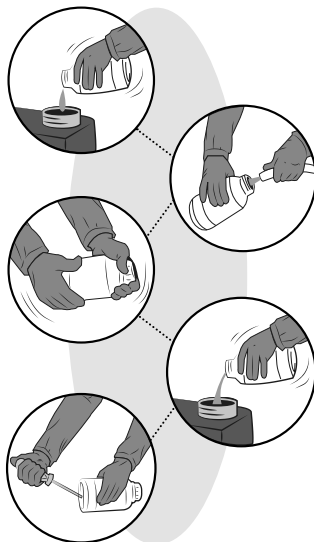
6. Triple Rinse of Empty Agrochemicals Containers

NOTICE: Even the containers considered empty contain chemical residues. Therefore, discarding the containers without washing out the residues is extremely dangerous to man, animals and environment. In the case of metal, plastic and glass chemical containers, each container must be rinsed three times to ensure the residues are completely removed. This manual describes how to make the triple rinse in a correct, safe and effective way.

1. Immediately after emptying the container, you must keep it with the opening upside down over the sprayer tank opening or over the bucket that you are using to prepare the chemical mixture for at least 30 seconds, until no residue is left in the container, when the drops are falling in long intervals.
2. Hold the container in the upright position and fill it with water up to 1/4. For example: in a 1000 ml container, put 250 ml of water.
3. Install the container cap and tight it enough to avoid leakage during the agitation.
4. Agitate the container strongly in all ways (horizontal and vertical), for approximately 30 seconds to remove the residues that are on the container internal walls.
5. Take the container cap off and carefully pour the rinse water into the spray tank.
6. Keep holding the container over the spray tank opening

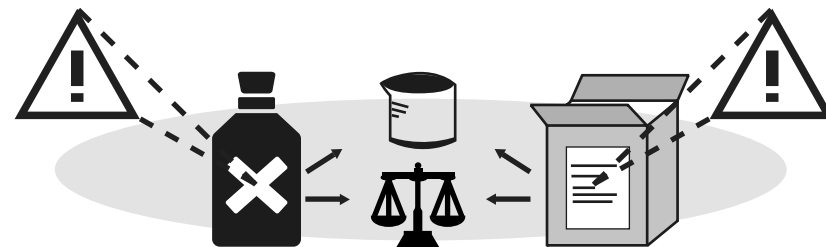
for approximately 30 seconds to the last drop.

7. Repeat this operation twice more. This way, you complete the triple rinse.
8. Make the plastic and metallic containers useless by piercing the container bottom with a pointed instrument. This way, their labels are not damaged for identification purposes.

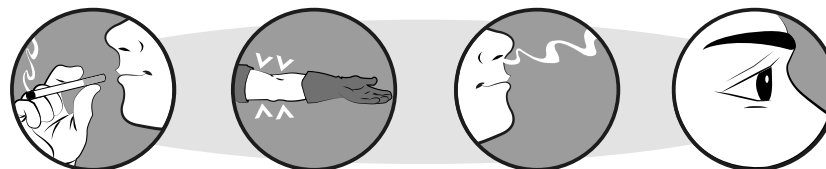


7. Critical Safety and Health Information

- Read carefully the chemicals manufacturer's labels.



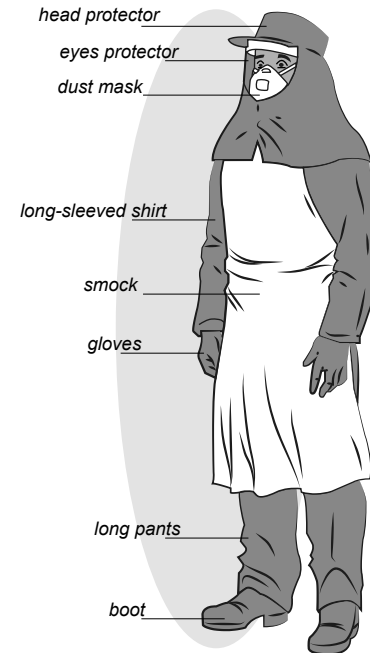
- Do not eat, drink or smoke while spraying. Serious risk of poisoning.



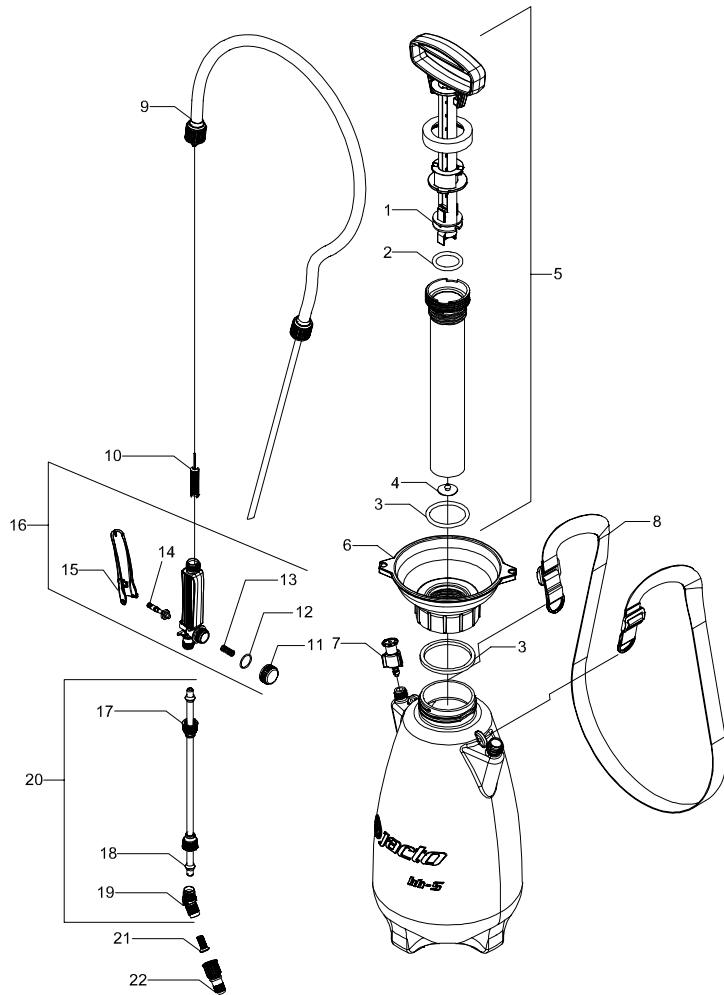
- Do not use the sprayer when tired, ill or under the influence of alcohol or other drugs or medication;
- Wash hands and other parts of the body that have touched chemicals before starting to spray;
- After finishing the spray application, take a shower with plenty of water and soap. And put on clean clothes;
- The clothing used during the application must be washed separate from other clothes of ordinary use;
- In case of poisoning, immediately seek medical attention and show the label of the product used;
- Use of individual protective clothing and safety equipment is obligatory;
- Keep the products out of reach of children and animals;



- Do not pollute the environment. Properly recycle or dispose of any equipment or components. Follow all government regulations and standards (municipal, state and federal) and manufacturer instructions when disposing of the equipment or any components.



8. Parts List



Nº	Code	Description	Qty.
1	1232054	FASTENER	1
2	1232050	PISTON RING	1
3	1232052	SEALS	1
4	1232057	DIAPHRAGM	1
5	1232055	PUMP ASSEMBLY	1
6	1232056	LID TANK	1
7	1232053	PRESSURE RELIEF VALVE	1
8	1232067	COMPLETE BELT	1
9	1232058	COMPLETE HOSE FOR LP3	1
10	1168418	FILTER LP-3	1
11	1168544	TRIGGER VALVE CAP AND O-RING	2

Nº	Code	Description	Qty.
12	1220934	O-RING OR1-019	2
13	1180613	STAINLESS STEEL SPRING 9,2	1
14	1168422	NEEDLE LP-3 WITH O-RINGS	1
15	1168421	TRIGGER VALVE LEVER LP-3	1
16	1168419	TRIGGER VALVE ASSEMBLY LP-3	1
17	915744	SCREW CAP 11/16"	2
18	909309	CONE PACKING	2
19	635276	ELBOW 11/16"-16 UN	1
20	1224677	LANCE PJB-8c COMPLETE	1
21	592139	NOZZLE FILTER M50/60	1
22	325787	BLUE ADJUSTABLE CONE NOZZLE	1

9. Statement of Limited Warranty

MÁQUINAS AGRÍCOLAS JACTO S.A. shall warrant the equipment described in this manual and shall repair or replace parts and components which, under normal operation and wear, in accordance with technical recommendations, show DEFECTS IN MATERIAL OR WORKMANSHIP, based on the following conditions.

WARRANTY PERIOD

- 06 (six) months from the date of sale to the original purchaser.

WARRANTY APPLICATION

- JACTO shall honour this warranty, free of charge, if any part or component shows defect in MATERIAL OR WORKMANSHIP, after final analysis at the factory.

THIS WARRANTY SHALL BE NULL & VOID IN CASE OF:

- Misuse of the equipment against specifications in the OPERATOR'S MANUAL, overwork or accidents.
- Preventive/remedial maintenance performed by unauthorized people.
- Use of parts and components not supplied by JACTO.
- Modification of the equipment or any characteristic of the original design.

THIS WARRANTY SHALL EXCLUDE:

- Parts which show wear and tear due to use, UNLESS THEY SHOW DEFECTS IN WORKMANSHIP, ASSEMBLY OR MATERIAL.
- Damages resulting from accidents.
- Transportation or freight of the equipment, parts and components in case such warranty is not approved.
- Transportation and mobilization of technicians.

GENERAL INFORMATION:

- Parts replaced within the warranty period shall be property of JACTO.
- The warranty on replaced parts and components shall expire together with the equipment warranty period.
- Eventual delays in performing services shall not give the owner right either to indemnity or to extension of the warranty period.
- JACTO reserves the right to modify its products or to interrupt the manufacture without prior notice.